

IMPEX[®] MINE BLUNGER

The **IMPEX Mobile Mine Blunger** was developed and perfected after over 40 years of experience of intensive use in the kaolin clay industry in Georgia. Units have been supplied to mining companies in North America, South America and Asia.



INDUSTRIAL MINERALS PROCESS EQUIPMENT CORPORATION
IMPEX CORPORATION

ENGINEERING • CONSULTANTS • MANUFACTURING • SALES

MAIN OFFICE
JOHN WILLIAMSON, PRESIDENT
P. O. Box 1028
Milledgeville, GA 31061
Telephone 912-452-5636
Fax 912-452-5636

TECHNICAL CENTER
JOE IANNICELLI, VICE-PRESIDENT
3963 Darien Highway
Brunswick, GA 31525
Telephone 912-265-2000
Fax 912-265-3000

FEATURES OF IMPEX MINE BLUNGER

MOBILITY

Tractor treads and steel wheels with scrapers, pull bar, and fifth wheel. Alternate design on skids or stationary.

FEED HOPPER

10'6" Cone to 4'0" at bottom. Hopper has protected spray ring around top peripheral edge to prevent material build-up.

MAIN SHAFT DESIGN

High-strength steel designed for 400 HP load. Two four bolt special duty bearings with slingers for protection. Shaft has proven mechanical seal plus expeller vanes on rotor to reduce pressure on seal.

TRANSFER PUMP

Goulds Model RXL self priming pump constructed of chrome alloy for extremely abrasive conditions. Capacities to 909 m³/hr. (4000 GPM), head to 97 m (325 ft.), pressure to 1379 kPa (200 PSIG), solids up to 109 mm (2⁷/₈ in.). Alternate pump designs available.

SEAL WATER PUMP

Required only if water supply line pressure is below 137.9 kPa. (20 PSIG).

MOTOR

Up to 600 HP—900 RPM—open drip proof or TEFC, 4160 V, 3 Ph., 60 Hz., or special voltage/Hz., designed for vertical mount.

Top shaft for pump—150 HP design, bottom shaft for mill—designed for 400 HP.

MAINTENANCE

Motor base plate and pump base plate have pivot adjustable base for proper belt tension of both drives. Motor base and pump base will swing out side of housing for maintenance. Removable access ladder to inside available.

ROTATING ASSEMBLY

Complete rotating assembly may be replaced by unbolting from housing and lifting out through top of cone.

UTILITY CONNECTIONS

38 mm (1¹/₂") chemical hose bib, 102 mm (4") 150 psi flange water, 152 mm (6"), 150 psi flange slurry, cable connection for 4160 volts, 3 Phase, maintenance transformer 110/220 Volts for lights, instruments, and welding machine, plus starter for motors.

BLUNGING CHAMBER

Replaceable abrasive resistant steel liners or special replaceable rubber liners.

BLUNGER

Replaceable upper screens for non-sticking materials and/or replaceable submerged screens for gummy materials. Alternate designs are available in AR Steel, stainless or rubber covered.

CUTTER BLADES

Available in AR Steel, hard facing, chrome alloy casting, or rubber covered. Alternate designs are also available.

OPERATORS CONTROL ROOM INCLUDES:

- Water control valve
- Chemical control flow meter
- Blunger dump valve
- Sample valve
- Test sink and drain valve
- Wash water valve
- Pressure gages on chemical, water and pump discharge
- Main starter control
- Lights and auxiliary power
- Automatic lubrication system



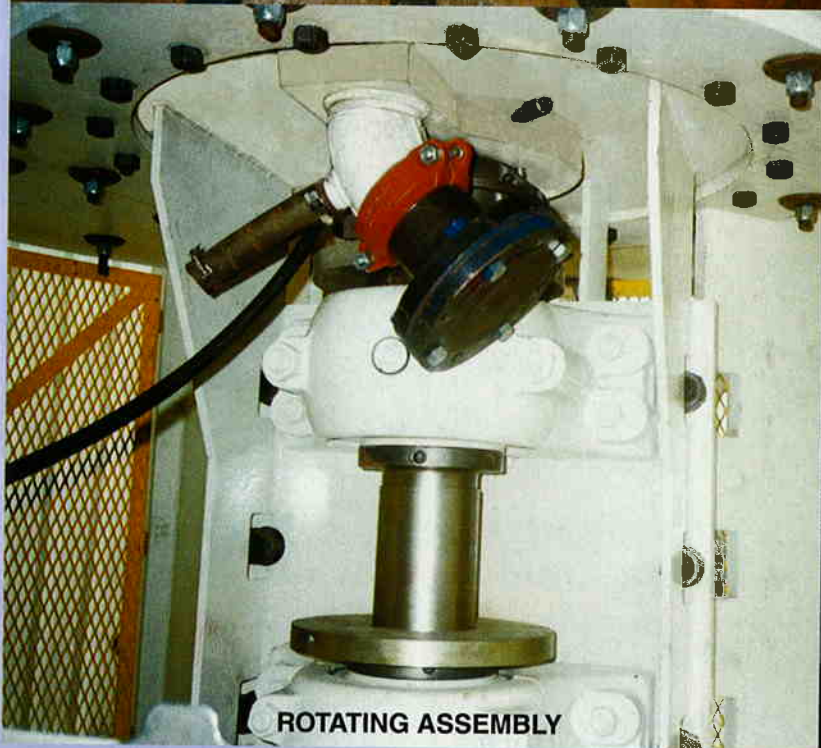
UPPER SCREENS



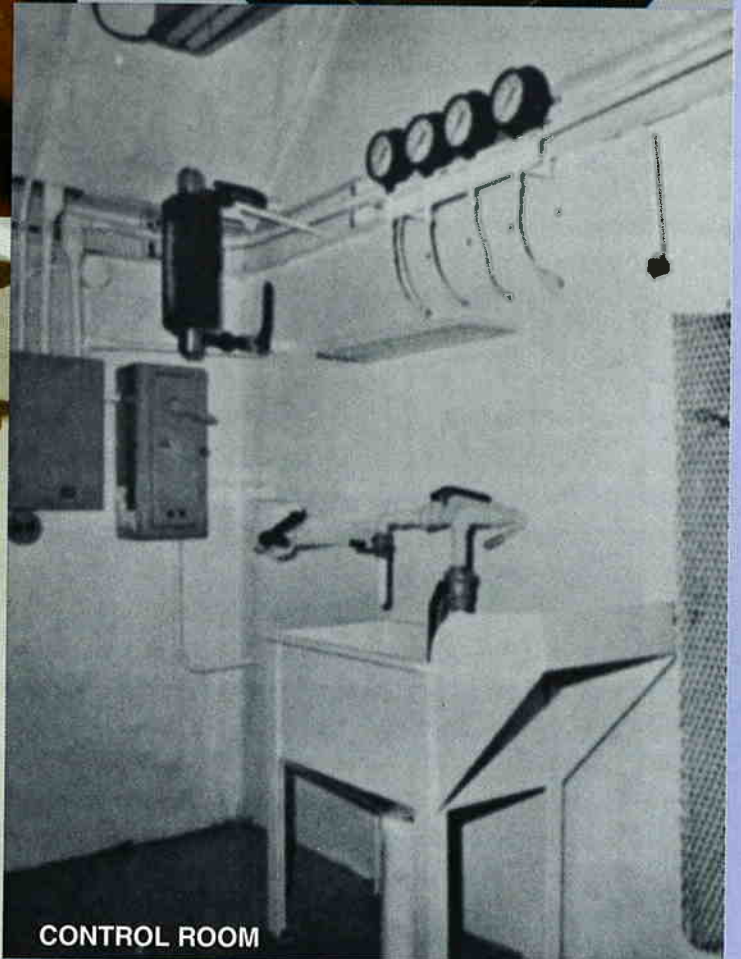
FEED HOPPER WITH MAINTENANCE LADDER



CUTTER BLADE



ROTATING ASSEMBLY



CONTROL ROOM